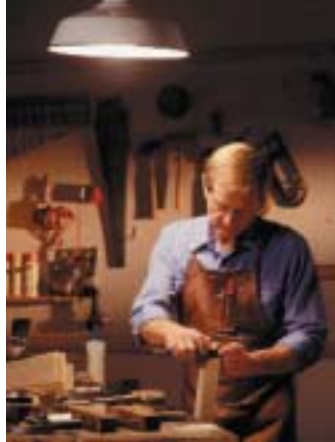


ES Valve Vacuum Inlet Valve and Trim Plate...

Adding style and flare to Central Vacuum Systems!

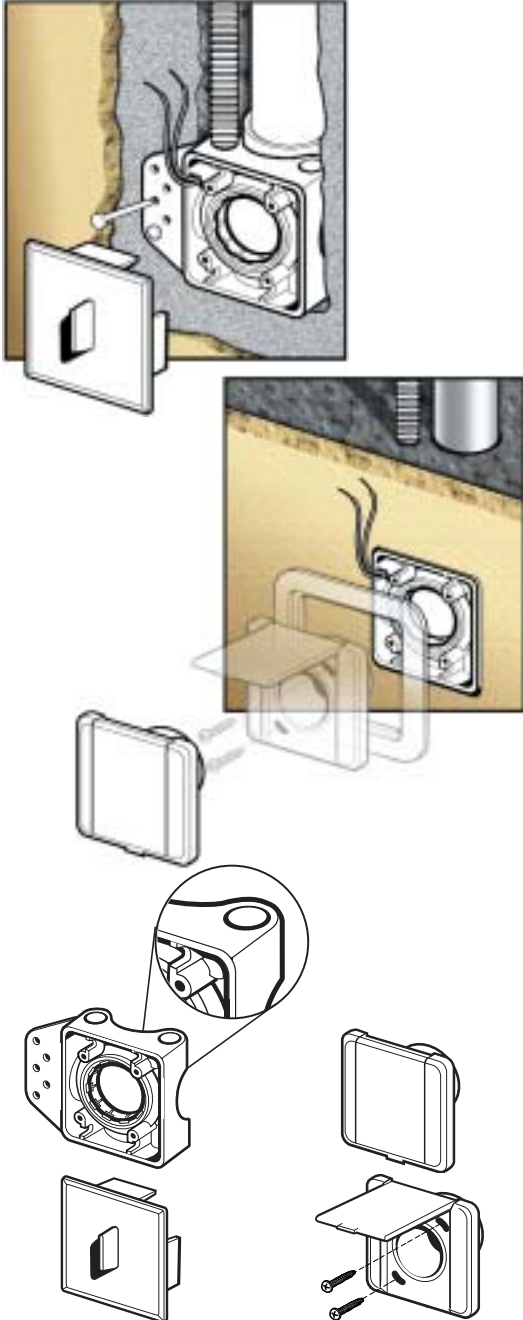


Vaculine

www.vaculine.com

ES Valve®

MOUNTING PLATE, VACUUM INLET VALVE & TRIM PLATE



ES Mounting Plate

ES Valve

Vaculine is a registered trademark of Canplas Industries Ltd.

Canplas Industries Ltd.
P.O. Box 1800, 31 Patterson Rd.
Barrie, Ontario
Canada L4M 4V3
Tel: (705) 726-3361
Fax: (705) 726-8991
Website: www.vaculine.com
E-mail: vaculine@canplas.com

Canplas Industries Ltd.
11408 - 163rd Street
Edmonton, Alberta
Canada T5M 3T3
Tel: (780) 451-3206
Fax: (780) 452-0536

Canplas Industries Ltd.
940 Cliveden Ave.
New Westminster, B.C.
Canada V3M 5R5
Tel: (604) 526-2855
Fax: (604) 526-5002

Canplas Inc.
11402 East 53rd Ave., Suite 200
Denver, Colorado
U.S.A. 80239
Tel: (303) 373-1918
Fax: (303) 373-1923

United States and Canada Toll Free Telephone No.: 1-800-461-1771

ES Mounting Plate

- ▶ **material**
 - Injection molded in White ABS.
- ▶ **function**
 - For secure mounting of VacuValve® ES Vacuum Inlet Valves for masonry construction.
- ▶ **features**
 - Full face flange.
 - Four easy to remove low voltage conduit knockouts.
 - Plaster guard to protect mounting plate and vacuum piping during construction.
 - Knife edge ridge prevents chipping of finished masonry surface.
 - Posts on cover plate prevent masonry materials from entering screw hole positions on mounting plate.
 - Removable o-ring gasket.
 - Available in short and 3/4" spigot models.

ES Valve & Trim Plate

- ▶ **material**
 - Injection molded in White ABS. Available in White, Almond, Ivory and Black.
- ▶ **function**
 - Connects vacuum hose to central vacuum system for masonry construction.
- ▶ **features**
 - Sleek, low profile valve design with textured surface.
 - Contemporary styling plus sturdy construction for years of use.
 - Maxi door (opens 180°) for ease of opening.
 - Small 3 1/2" x 3 1/2" valve body for simple and unassuming installations.
 - No visible exterior screws.
 - Half moon countersunk screw holes for proper valve alignment.
 - Concealed door spring for continuous reliable use.
 - Rugged screw contact bodies for low voltage wiring.
 - Guides for current carrying hoses.
 - Trim plate available for quality finish.

▶ ordering information

PART #	COLOR	CARTON QTY.
Mounting Plate		
765569W	White	36
ES Valve		
775592	Ivory	24
775592A	Almond	24
775592W	White	24
775592BLK	Black	24
Trim Plate		
775588	Ivory	165
775588A	Almond	165
775588W	White	165
775588BLK	Black	165