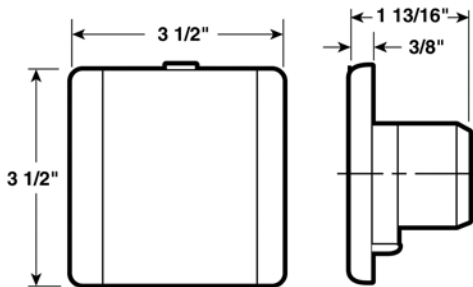
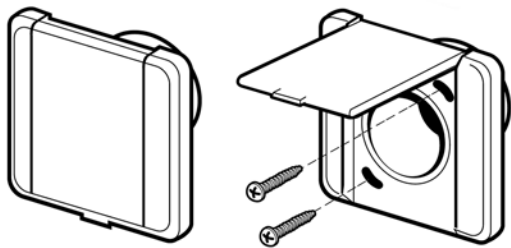


ES[®] Valve

The Stylish Valve

- European Style body matches most european wall plates
- Modern, sleek, low profile design
- Half moon screw holes for improved alignment
- No visible screws or door spring
- Stainless steel components

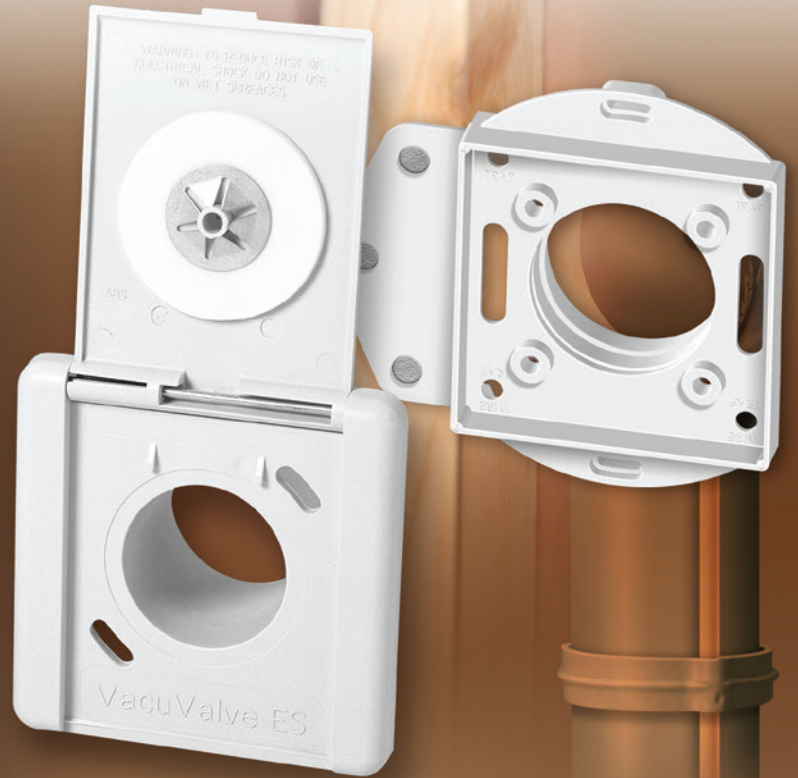


Available Colours



Ivory Almond White Black

Part Number	Colour	Ctn. Qty.	Ctn/Skid
775592	Ivory	48	72
775592A	Almond	48	72
775592W	White	48	72
775592BLK	Black	48	72



Mounting Plates

Whether your installation is in a stud or concrete wall home, Canplas[®] offers an ES[®] Mounting Plate for you! Canplas[®] now offers a choice in ES[®] Mounting Plates - one for concrete wall installations and one for stud wall installations. Both share these common characteristics:

Square, symmetrical body

- Allows the plate to be installed in four different directions including right or left of a vertical stud and above or below a horizontal stud

Solid connection between plate and flange

- Provides rigidity between the stud and the valve

Elongated screw holes

- Eases squaring the valve if the mounting plate or stud isn't installed square

Stepped screw holes

- Allows use of a drywall screw to affix a cover plate or valve without affecting the larger hole for the permanent screw

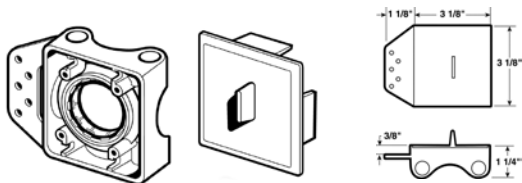
Available in 3/4" and 1/4" spigot models

Universal use

- Can be used with ES[®] Valve or VacuValve[®]

ES[®] Mounting Plate for Concrete Walls with Plaster Guard

The ES[®] Mounting Plate for Concrete Walls has four entry points to allow ENT or EMT low voltage access. Each entry has an easily removed knockout. During an installation, one knockout should be removed to allow tubing access; the other three should remain in place to prevent cement from entering the mounting plate.

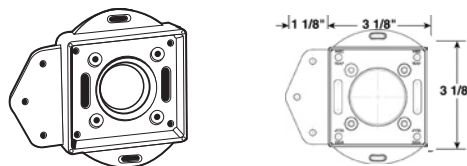


Spigot Size	Part Number	Colour	Ctn. Qty.	Ctn/Skid
3/4"	765569W	White	60	72
1/4"	765569LW	White	60	72

Available in White only

ES[®] Mounting Plate for Stud Walls

The ES[®] Mounting Plate for Stud Walls has four open wire traps to connect low voltage wire to a valve quickly and easily. The wire trap holes are small enough to allow an installer to tie a knot in the end of the wire to keep it from falling into the wall.



Spigot Size	Part Number	Colour	Ctn. Qty.	Ctn/Skid
3/4"	765564W	White	60	72
1/4"	765564LW	White	60	72

Available in White only

ES[®] Plaster Guard

The ES[®] Plaster Guard fits both choices of ES[®] Mounting Plates.

Part Number	Colour	Ctn. Qty.	Ctn/Skid
765569-2	White	100	72

